

Grade 3

English Language Arts

Rochester City Schools

Results of the **2011-12**
New York State Standardized Tests

Note to reader: This report is based on NY State standardized test results for the **2011-12** school year. A previous report issued in March of 2011 was based on data for **2010-11**. The Background section of this report (page 2) describes which data elements are updated for this report.

August, 2012
Rochester Area Community Foundation
Author: Edward Doherty



1. Background

In May, 2012 Rochester Area Community Foundation and ACT Rochester released a report entitled *Grade 3 English Language Arts: An Analysis of Rochester City School Results on the 2010-11 New York State Standardized Tests*.¹ That report summarized test results; looked at trends; analyzed demographic correlations; and examined school-level results. The primary data source for the report was the School Report Cards issued by the New York State Department of Education in March 2012.

Test scores for the 2011-12 school year have been released². This report contains updated information on those test results. However, the detailed School Report Cards are not expected to be released until sometime in 2013, and therefore, a full analysis for 2011-12 cannot be done at this time. Data on demographics and other characteristics will not be available on a school-by-school basis until the School Reports Cards are released. Accordingly, this report focuses solely on the Grade 3 ELA test scores for 2011-12.

2. Overview

2011-12 results for Rochester school children are discouraging. Only 23% (22.7%) of Rochester's third graders met or exceeded New York State standards on the English Language Arts test³. As described in Table 1, Rochester performed considerably poorer than the statewide mark (56%), lower than our regional level (55%), and considerably lower than all suburban school districts⁴.

Table1: Percent of third graders achieving level three or higher on English Language Arts³ – Local Comparisons

Comparisons: ACT Rochester Region			
Area	2010-11	2011-12	Change
Rochester City	24	23	-1
Seven County Region ⁵	57	55	-2
Monroe County	55	55	No change
Highest County ⁶	61	58	-3
Lowest County ⁶	54	49	-5
New York State	56	56	No change

1. Available from ACT Rochester at: www.actrochester.org (see: "Project News")
2. New York State Department of Education www.oms.nysed.gov/press/3-8MathELATestScores.2012.html
3. Level 3 is "Meets Standard" and Level 4 is "Exceeds Standards." For convenience in this report, these levels combined are referred to as "passing."
4. The "passing" rate among all Monroe County suburban districts is 68%. The range is from a low of 48% (Gates-Chili) to a high of 86% (Pittsford).
5. The seven-county ACT Rochester region: Genesee, Livingston, Monroe, Ontario, Orleans, Wayne, Wyoming.
6. For 2010-11 the regional high and low counties were Wayne and Livingston, respectively. For 2011-12 the regional high and low counties were Genesee and Wyoming, respectively.

2. Overview (continued)

Rochester also performed lower than *any* of the large urban school districts. At 23%, Rochester is lower than Syracuse and Buffalo (each at 27%), and considerably lower than cities in the eastern part of the state. Rochester’s percent “passing” was less than one half the large urban district average⁷.

Rochester’s achievement declined by one percentage point from 2010-11 (actually, by 1.7 points when both years are rounded to the tenths digit). All other large urban districts, except Albany, improved.

Table2: Percent of third graders achieving level three or higher on English Language Arts - New York State Large Urban District Comparisons

Comparisons: New York Large Urban Districts			
District	2010-11	2011-12	Change
Rochester City	24	23	-1
Albany City	44	37	-7
Buffalo City	26	27	+1
New York City	48	49	+1
Syracuse City	25	27	+2
Yonkers City	44	44	No change
New York – Large Urban Districts Total ⁷	46	47	+1
New York State	56	56	No change

3. The Schools

Appendix A shows school-by-school results for each of Rochester’s elementary schools. Only one Rochester school exceeded the statewide “passing” rate of 56% (School #52). Two additional schools exceeded the statewide large urban school “passing” rate of 47% (School #23 and School #25).

Seven schools managed only single-digit “passing” results, including School #53 (Franklin Montessori), which did not have any students at the “passing” level. It should be noted that only 17 third graders at School #53 participated in the exam.

Appendix B compares 2011-12 results with the prior year. Overall, Rochester’s schools declined by 1.7 percentage points. 14 schools experienced increases in grade 3 ELA “passing” percentages, while 24 schools experienced decreases. Among the noteworthy year-to-year changes are the following:

7. The large urban district totals were calculated by the author of this report using the New York State data for the school districts included in Table 2

3. The Schools (continued)

Schools with double-digit increases

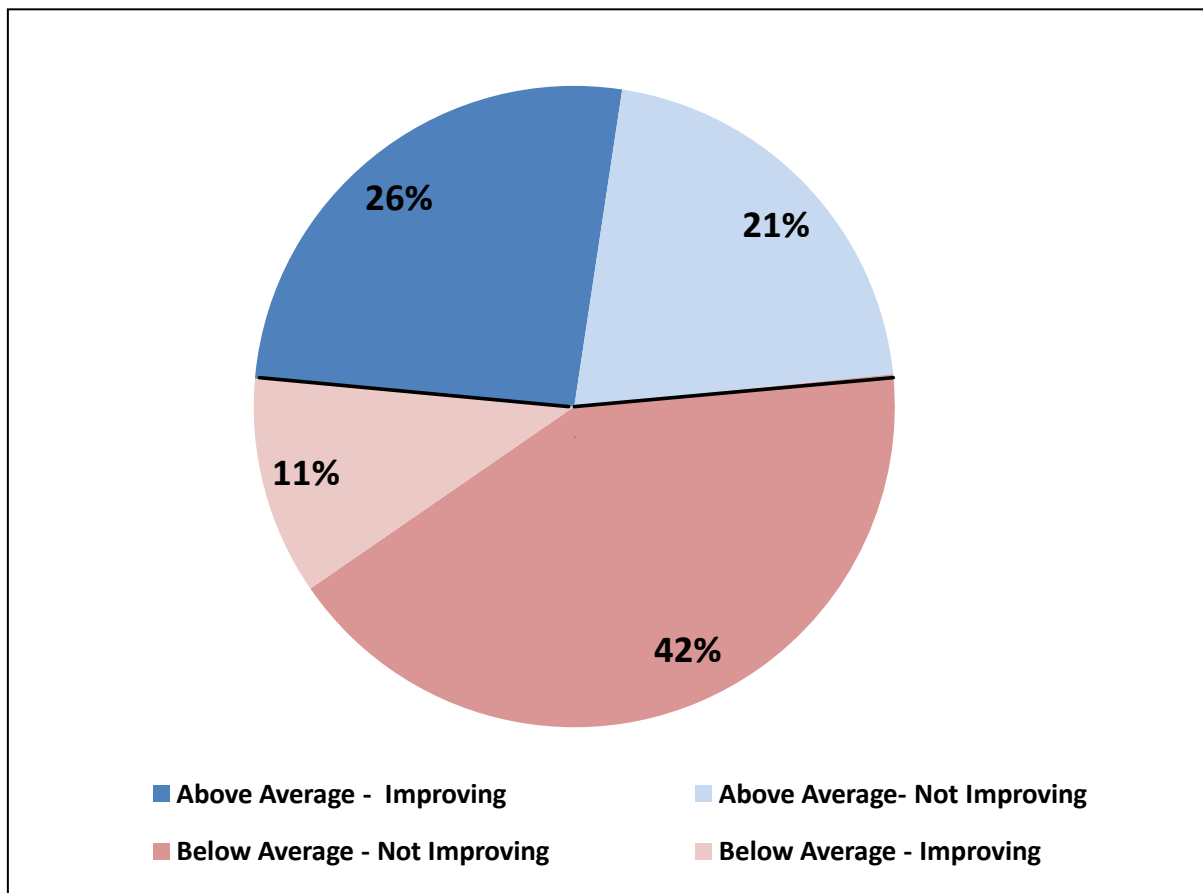
+ 22 points # 5 John Williams
 + 21 points #52 Frank Fowler Dow
 + 13 points #58 School of Inquiry
 + 11 points #33 Audubon
 + 11 points #44 Lincoln Park
 + 10 points #54 Flower City

Schools with double-digit declines

- 38 points #53 Franklin Montessori
 - 24 points # 2 Clara Barton
 - 17 points #12 James PB Duffy
 - 11 points #25 Nathaniel Hawthorne
 - 11 points #20 Henry Lomb
 - 11 points #42 Abelard Reynolds
 - 11 points #29 Adlai Stevenson
 - 11 points #34 Dr Louis Cerulli

Chart 1 summarizes all Rochester elementary schools based on “Above Average” and “Below Average” results (average for Rochester City School District) and based on “Improving” or “Not-Improving” trends (compared with 2010-11). Appendix C provides additional detail, including the performance of each school.

Chart 1: Percent of schools above and below school district average and percent improving and not improving



3. The Schools (continued)

Two disturbing trends can be easily detected.

- 16 schools (42% of all schools) are in the “Below Average” and “Not Improving” quadrant.
- Three of the schools in the “Above Average,” but “Not-Improving” category experienced double-digit declines. Obviously, if these trends continue, these schools will lose their “Above Average” status.

4. Charter Schools

There are only three charter schools currently educating Rochester’s third grade children. Collectively, these schools serve about 5 percent of Rochester’s Grade three students. For 2011-12, these charter schools achieved the following Grade Three ELA results:

<u>School</u>	Number of Students	
	<u>Taking Grade 3 Exam</u>	<u>Percent “Passing”</u>
Eugenia Maria De Hostos Charter School	49	55
Genesee Community Charter School	31	77
Urban Choice Charter School	44	52

All of the charter schools performed at a level above the Rochester City School District average (23%) and above the New York State large urban districts average (47%). However, all of the charter schools also showed declines from 2010-11.

<u>School</u>	Percent “Passing”		
	<u>Grade 3 ELA</u>		
	<u>2010-11</u>	<u>2011-12</u>	<u>Change</u>
Eugenia Maria De Hostos Charter School	66	55	-11
Genesee Community Charter School	90	77	-13
Urban Choice Charter School	56	52	- 4

5. Conclusions

This report attempts a descriptive measurement of the achievement gap experienced by Rochester city students in grade 3 English language arts. **The results are alarming:**

- Only 23% of Rochester's students are achieving a level commonly considered as "passing;"
- Rochester lags the statewide "passing" average (56%) by a wide margin;
- Rochester lags the statewide "passing" average for large urban districts (47%) by a considerable margin;
- Rochester scored the lowest among all large urban districts in New York (4 points lower than the next lowest districts - Syracuse and Buffalo);
- Rochester's score declined nearly 2 percentage points from the previous year;
- 63% of Rochester's public schools are in the "not improving category;"
- In 7 Rochester public schools fewer than 10% of the 3rd graders "passed;"
- All 3 charter schools serving third graders experienced declines, though all still outperformed most public schools.

It is apparent that the achievement gap for Rochester's third graders cannot be effectively addressed through tweaking strategies. Instead, education and community leaders should consider a comprehensive initiative to review policies, classroom-based strategies, and educational support systems.

This review should include monitoring existing initiatives such as extended-day pilot programs, summer learning loss programs, out-of-school time programs, and recently announced attendance improvement strategies.

Some additional strategies could include:

- An assessment of the curriculum and classroom techniques used at Rochester's more successful schools (such as School #52 and the three the charter schools);
- A special "urgent action" plan for the 15 schools that achieved either single digit results, double digit declines, or both.
- As assessment of community supports systems, including: health care; out-of-school time programs; mentoring opportunities; tutoring; and reading support programs.

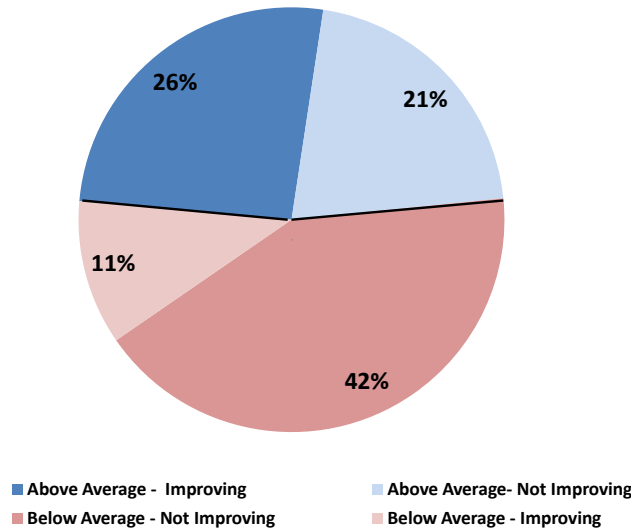
Grade 3 English Language Arts: 2011-12 Results - Summary by School

School #	School Name	Level 3 -%	Level 4-%	Level 3 +4 %	Level 3+4 %-rounded
1	Martin B Anderson	38.6	0	38.6	39
2	Clara Barton	7.5	0	7.5	8
3	Nathaniel Rochester	19	0	19	19
4	George M Forbes	2	0	2	2
5	John Williams	35.9	1.6	37.5	38
6	Dag Hammerskjold	35	0	35	35
7	Virgil Grissom	34.1	1.2	35.3	35
8	Roberto Clemente	6.1	0	6.1	6
9	Dr Martin Luther King	11.4	0	11.4	11
10	Dr Walter Cooper	14.6	0	14.6	15
12	James PB Duffy	19.3	1.8	21.1	21
15	Children's School	19.5	0	19.5	20
16	John W Spencer	18.3	0	18.3	18
17	Enrico Fermi	10.7	1.3	12	12
19	Dr Charles Lunsford	25	0	25	25
20	Henry Lomb	28.6	0	28.6	29
22	Lincoln	8.9	0	8.9	9
23	Francis Parker	45.7	6.5	52.2	52
25	Nathaniel Hawthorne	45.7	2.9	48.6	49
28	Henry Hudson	29.1	0	29.1	29
29	Adlai Stevenson	4.3	0	4.3	4
30	Gen Elwell Otis	11.3	0	11.3	11
33	Audubon	37	2.1	39.1	39
34	Dr Louis Cerulli	8.5	0	8.5	9
35	Pinnacle	30.6	0	30.6	31
36	Henry Longfellow	23.1	0	23.1	23
39	Andrew Townson	21.8	1.3	23.1	23
41	Kodak Park	14.4	0	14.4	14
42	Abelard Reynolds	23.9	0	23.9	24
43	Theodore Roosevelt	18.3	1.2	19.5	20
44	Lincoln Park	18.8	0	18.8	19
45	Mary M Bethune	9.9	0	9.9	10
46	Charles Carroll	25	2.5	27.5	28
50	Helen B Montgomery	18.3	0	18.3	18
52	Frank Fowler Dow	58.1	9.3	67.4	67
53	Franklin Montessori	0	0	0	0
54	Flower City	25	0	25	25
57	Early Childhood	NA	NA	NA	NA
58	School of Inquiry	35.6	6.7	42.3	42
Total		21.7	0.9	22.6	23

Grade 3 English Language Arts: 2011-12 Results – Comparison to 2010-11

School #	School Name	2011-12 Level 3+4	2010-11 Level 3+4	Change # points
1	Martin B Anderson	39	43	-4
2	Clara Barton	8	31	-24
3	Nathaniel Rochester	19	17	2
4	George M Forbes	2	11	-9
5	John Williams	38	16	22
6	Dag Hammerskjold	35	28	7
7	Virgil Grissom	35	31	4
8	Roberto Clemente	6	7	-1
9	Dr Martin Luther King	11	19	-8
10	Dr Walter Cooper	15	14	1
12	James PB Duffy	21	38	-17
15	Children's School	20	24	-5
16	John W Spencer	18	20	-2
17	Enrico Fermi	12	18	-6
19	Dr Charles Lunsford	25	32	-7
20	Henry Lomb	29	40	-11
22	Lincoln	9	17	-8
23	Francis Parker	52	56	-4
25	Nathaniel Hawthorne	49	60	-11
28	Henry Hudson	29	25	4
29	Adlai Stevenson	4	15	-11
30	Gen Elwell Otis	11	10	1
33	Audubon	39	28	11
34	Dr Louis Cerulli	9	19	-11
35	Pinnacle	31	25	6
36	Henry Longfellow	23	26	-3
39	Andrew Townson	23	18	5
41	Kodak Park	14	17	-3
42	Abelard Reynolds	24	35	-11
43	Theodore Roosevelt	20	20	-1
44	Lincoln Park	19	8	11
45	Mary M Bethune	10	17	-7
46	Charles Carroll	28	29	-2
50	Helen B Montgomery	18	18	0
52	Frank Fowler Dow	67	46	21
53	Franklin Montessori	0	38	-38
54	Flower City	25	15	10
57	Early Childhood	NA	NA	NA
58	School of Inquiry	42	29	13
Total		23	24	-1

All City Elementary Schools by Performance Category¹
 (Percentages = percentage at Level 3 or 4 in 2011-12;
 + or – indicate percentage point changes from 2010-11)



<u>Above RCSD Average & Improving</u>	<u>Above RCSD Average & Not Improving</u>
<ul style="list-style-type: none"> ● #52 Frank Fowler Dow (67%; +21 points) ● #58 School of Inquiry (42%; +13 points) ● #33 Audubon (39%; +11 points) ● # 5 John Williams (38%; +22 points) ● # 6 Dag Hammarskjold (35%; +7 points) ● # 7 Virgil Grissom (35%; +4 points) ● #35 Pinnacle (31%; +6 points) ● #28 Henry Hudson (29%; +4 points) ● #54 Flower City (25%; +10 points) ● #39 Andrew J. Townson (23%; +5 points) 	<ul style="list-style-type: none"> ● #23 Francis Parker (52%; -4 points) ● #25 Nathaniel Hawthorne (49%; -11 points) ● # 1 Martin B. Anderson (39%; -4 points) ● #20 Henry Lomb (29%; -11 points) ● #46 Charles Carroll (28%; -2 points) ● #19 Dr. Charles Lunsford (25%; -7 points) ● #42 Abelard Reynolds (24%; -11points) ● #36 Henry Longfellow (23%; -3 points)
<u>Below RCSD Average & Improving</u>	<u>Below RCSD Average & Not Improving</u>
<ul style="list-style-type: none"> ● #44 Lincoln Park (19%; +11 points) ● # 3 Nathaniel Rochester (19%; +2 points) ● #10 Dr Walter Cooper (15%; + 1 point) ● #30 General Elwell Otis (11%; +1 point) 	<ul style="list-style-type: none"> ● #12 James PB Duffy (21%; -17 points) ● #43 Theodore Roosevelt (20%; -1 point) ● #15 Children’s School (20%;- 5 points) ● #50 Helen B. Montgomery (18%; no change) ● #16 John W. Spencer (18%; -2 points) ● #41 Kodak Park (14%; -3 points) ● #17 Enrico Fermi (12%; -6 points) ● # 9 Dr Martin Luther King (11%; -8 points) ● #45 Mary M. Bethune (10%; -7 points) ● #22 Lincoln (9%; -8 points) ● #34 Dr Louis Cerulli (9%; -11 points) ● # 2 Clara Barton (8%; -24 points) ● # 8 Roberto Clemente (6%; -1 point) ● #29 Adlai Stevenson (4%; -11 points) ● # 4 George M. Forbes (2%; -9 points) ● #53 Franklin Montessori (0%; -38 points)
<p><u>Note:</u> Schools in bold performed at or higher than the large urban district average</p>	

1. School #57 (Early Childhood School) did not participate in this exam and is not included.